

Unique Collaborations with Internal and External Partners

ILEA/LLM Conference February 22-23, 2018

Introductions



Laura Fernández
Assistant Dean for International and
Graduate Affairs
Moritz College of Law, OSU



Carrie Field
Director of Graduate and
Exchange Programs
UConn School of Law

Unique Partnerships with Internal Partners

- LLM/MBA
- Co-Sponsored Certificates
- Cross-Program Course Collaboration within degree programs
- Law and Language School
- Education Abroad – law and main campus

OSU Moritz – LLM/MBA collaboration

- Global Entrepreneurship Class at the OSU Business School open to LLM students
 - LLM/MBA students matched with local start-ups
 - Credit application towards LLM ?
 - Bar eligibility considerations
 - Tuition revenue consideration
- Option to offer joint LLM/MBA (add one year of studies)

UConn Law – Compliance Certificate

- Business School/Law School Partnership
- Courses available at business and law school
 - Cross-listed courses
 - Elective options on both campus
- <https://www.law.uconn.edu/academics/certificate-programs>

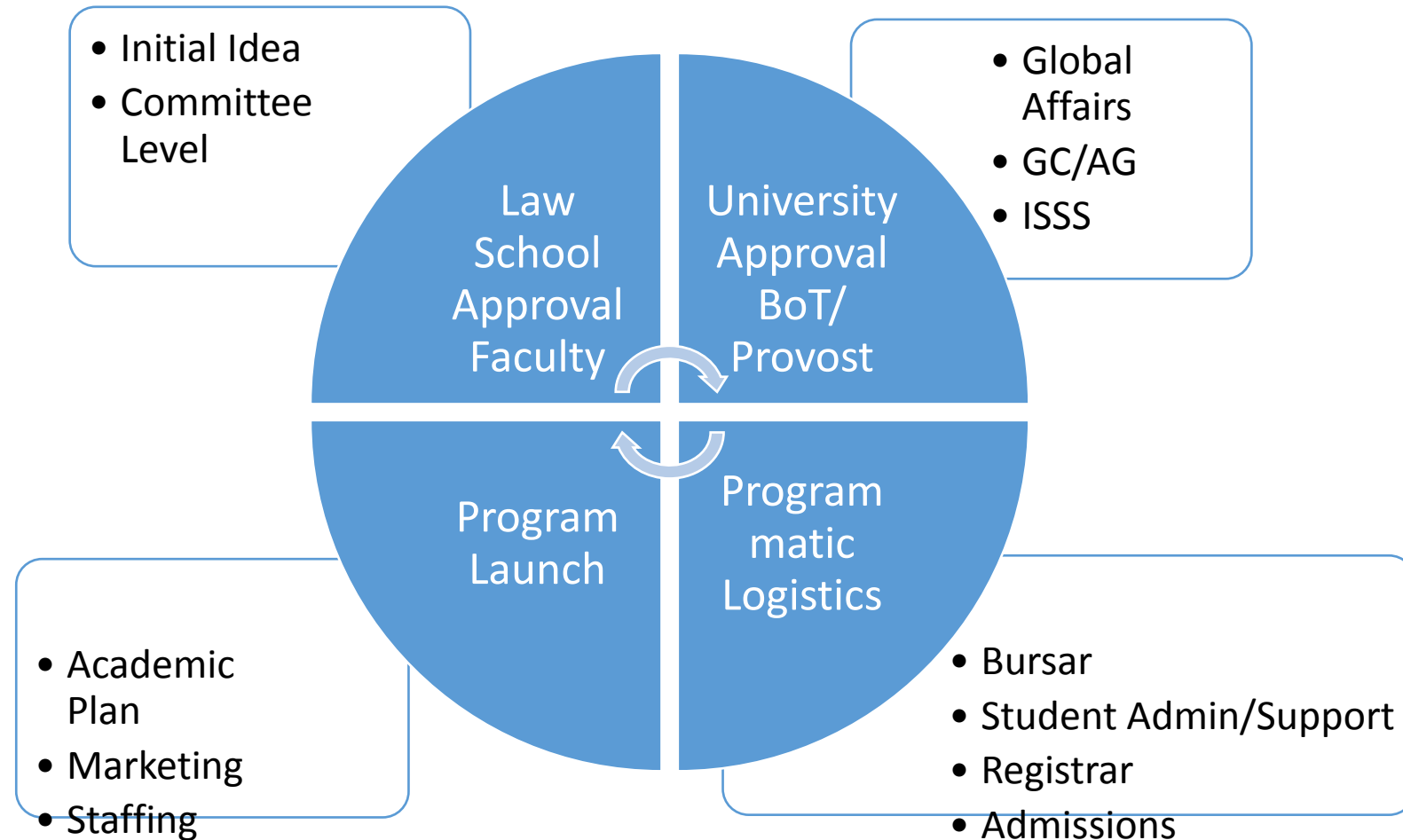
Other Initiatives

- HRSJ LLM and School of Social Work
- UCAELI/LLM program
- Education Abroad – using pre-law students to balance agreements

What type of school are you?



Internal Program Process



Approvals

- Faculty Approval
- Bot Approval
- ABA
- NEASC
- General Counsel
- Asst Attorney General
- Institutional Partner

Logistics

Academic Calendar
Billing Cycle/Collections
Course Scheduling
Staff Support
Marketing
Web Support
Faculty Hiring

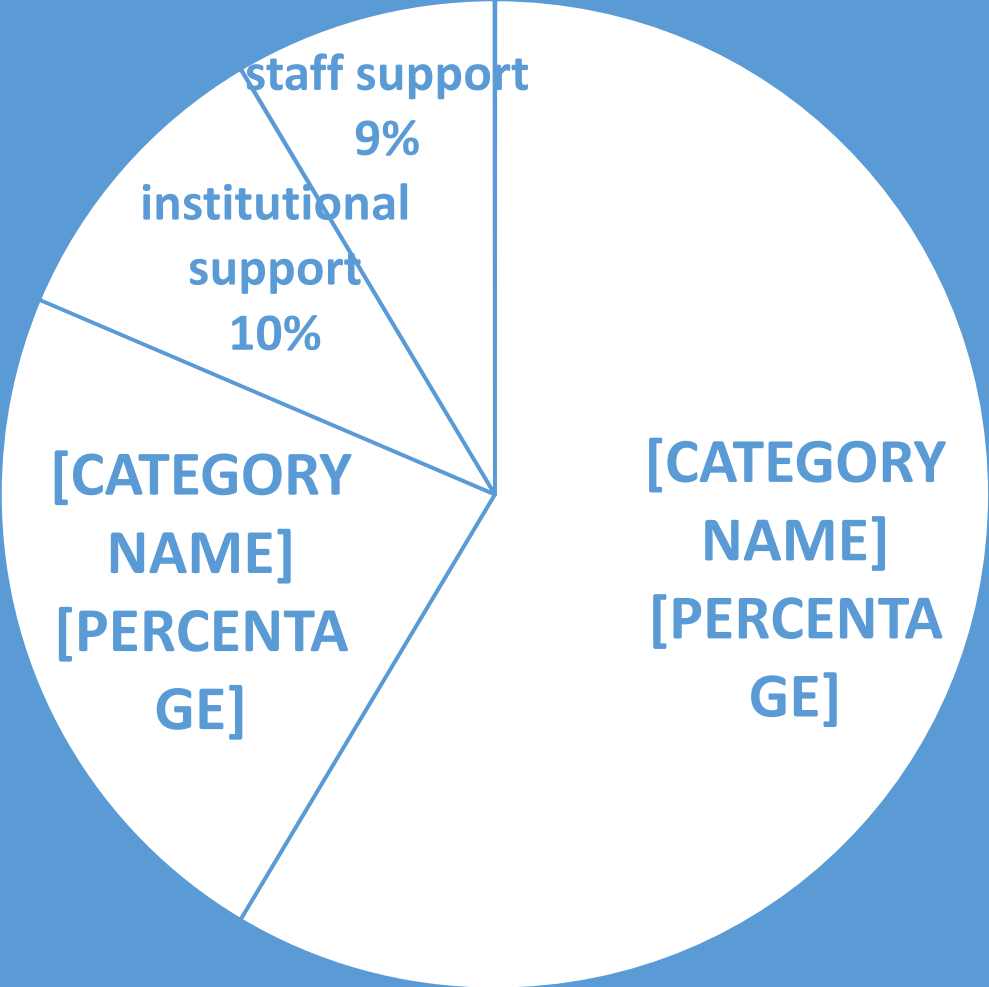
Academics

Admissions
Academic Offerings
Academic Regs
Student Support

External Programs

- Executive LLM (winter & summer course abroad)
- Dual degree programs
- Summer Programs (partner institutions)
 - Recruitment challenges
- Short-term international classes
 - Credit or no-credit
- Exchange to LL.M. (trends, numbers)
- Hybrid LL.M. Programs
- Online LL.M. Programs

WHAT IS NEEDED FOR SUCCESS



Break-Out

In small groups...

- Discuss the different types of institutions represented
- Draft a game plan for a new program launch or discuss already faced challenges and possible solutions